

Features

3/4", 1", 1-1/4" & 1-1/2" Ports

For application and feature/ benefit information for the combination units on this page, refer to individual component pages: Filters - page 51

Regulators - page 55

Lubricators - page 57

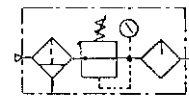


C28453-810

Performance Specifications

Max. Inlet Pressure:	250 PSIG (20.7 bar)
Operating Temperature Range:	0° to 175° F (-18° to 79° C)
Filter Element:	40 Micron Sintered Bronze
Bowl:	Metal Bowl/w Sight Glass
Pressure Range in Regulator:	5 to 125 PSI (.4 to 8.6 bar)
Gauge:	0 to 160 PSI

GRAPHIC SYMBOL



Ordering

PORT SIZE NPT	MODEL	WEIGHT LBS. (kg)	FILTER	COMPONENTS			PIPE NIPPLE
				REGULATOR	LUBRICATOR	GAUGE	

Select the basic model number which represents the port size desired. If other options are desired, order each component separately.

3/4"	C28453-810	11.50 (5.23)	F25451-110	R27451-100	L26451-110	100067	Y27-55-C
1"	C28463-810	11.50 (5.23)	F25461-110	R27461-100	L26461-110	100067	Y27-56-C
1-1/4"	C28473-810	11.50 (5.23)	F25471-110	R27471-100	L26471-110	100067	Y27-57-C
1-1/2"	C28483-810	10.50 (4.77)	F25481-110	R27481-100	L26481-110	100067	Y27-58-C

NOTE: Combinations models are shipped unassembled.

Dimensional Data

Super-Duty

