

Features

1/2", 3/4" & 1" Ports

These ARO Heavy-Duty Series regulators provide accurate and quick response to flow demands and line pressure changes, giving air-powered equipment the precise air pressure control needed.

- Zinc die-cast bodies are corrosion-resistant.
- Units can be panel-mounted.
- Balanced valve eliminates chatter and increases accuracy.
- Diaphragms and seals are nylon reinforced for enhanced elasticity and seal life.
- Easy-turn adjustment knob provides precise regulation under any pressure.



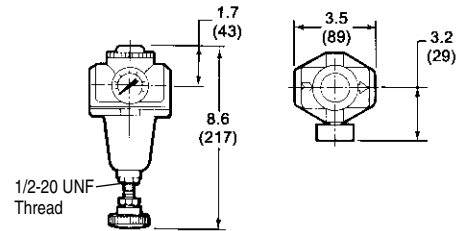
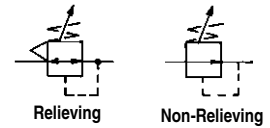
27364-600

Performance Specifications

Max. Inlet Pressure:	250 PSIG (17 bar)	Spring Housing:	Zinc Die Cast
Press. Range in Reg.:	0 to 250 PSIG (0 to 17 bar)	Body:	Zinc Die Cast
Oper. Temp. Range:	0° to 200° F (-18° to 93° C)	Seals:	Buna-N
Gauge Port:	1/4" NPT	Diaphragm:	Buna-N
Weight:	1/2" = 3.30 lbs. (1.5 kg), 3/4" = 3.21 lbs. (1.45 kg) 1" = 2.82 lbs. (1.28 kg)	Valve:	Brass
*Flow:	1/2" = 256 SCFM (121 dm³/s), 3/4" = 287 SCFM (135 dm³/s) 1" = 293 SCFM (138 dm³/s)	Knob:	High Impact ABS

*Air flow is at 125 PSIG (8.6 bar) and 100 PSIG (6.9 bar) outlet.

GRAPHIC SYMBOLS



Ordering

Select the basic model number which represents the port size desired. From table below, select the number representing regulator options required. **Order accessories separately.**

PORT SIZE	BASIC MODEL			
1/2"	2734 X-X	0	X	
3/4"	2735 X-X	0	X	
1"	2736 X-X	0	X	

Shaded area = Best-Selling Models

Relieving Option	Pressure Range* PSIG bar	Control Option
4 = Relieving 7 = Non-Relieving	0 = 5-125 .4-8.6 6 = 5-125 with 0-160 Gauge 1 = 0-50 .0-3.5 2 = 10-250 .7-17	0 = Standard Knob or Panel Mount 3 = Tamper-Resistant

***CAUTION:** Outlet pressure adjustment ranges are not minimum or maximum outlet pressure limits. Regulators can be adjusted to zero PSIG secondary pressure and, generally, to pressures in excess of those specified. The use of these regulators to control pressures outside of the specified ranges is not recommended.

Accessories

Regulator

MODEL	DESCRIPTION	MODEL	DESCRIPTION
100066	Gauge 0-60 PSIG (0-4 bar)	29970	Mounting Bracket (U-Bolt Type), 3/4" and 1" Pipe
100067	Gauge 0-160 PSIG (0-11 bar)	29960	Service Kit, Relieving Type
100083	Gauge 0-300 PSIG (0-21 bar)	29995	Service Kit, Non-Relieving Type
29077	Mounting Bracket, L-Type	29002	Spring, 5-125 lb. (Gold)
29999	Mounting Bracket (U-Bolt Type), 1/4", 3/8" and 1/2" Pipe	29119	Spring, 0-50 lb. (Green)
		29120	Spring, 10-250 lb. (Silver)

