

Features

1/2", 3/4" & 1" Ports

For application and feature/ benefit information for the combination units on this page, refer to individual component pages: Filters - page 47

Regulators - page 48

Lubricators - page 49

Performance Specifications

Max. Inlet Pressure:	200 PSIG (13.8 bar)
Operating Temperature Range:	0° to 125° F (-18° to 52° C)
Filter Element:	40 Micron
Bowl:	Polycarbonate w/ Bowl Guard
Pressure Range in Regulator:	5 to 125 PSI (.4 to 8.6 bar)
Gauge:	0 to 160 PSI



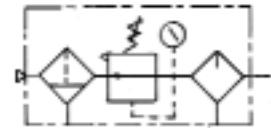
28368

Ordering

PORT SIZE NPT	MODEL	WEIGHT LBS. (kg)	COMPONENTS				PIPE NIPPLE
			FILTER	REGULATOR	LUBRICATOR	GAUGE	
1/2"	28343	10.16 (4.61)	25341-020	27344-000	26341-020	100067	Y27-54-C
3/4"	28353	10.12 (4.59)	25351-020	27354-000	26351-020	100067	Y27-55-C
1"	28363	9.37 (4.25)	25361-020	27364-000	26361-020	100067	Y27-56-C

Select the basic model number which represents the port size desired. If other options are desired, order each component separately.

GRAPHIC SYMBOL



NOTE: Shipped unassembled. For assembled unit, change the last digit from 3 to 8. Example: 28358.

Performance Specifications

Filter-Regulator

Max. Inlet Pressure:	200 PSIG (13.8 bar)
Operating Temperature Range:	0° to 125° F (-18° to 52° C)
Filter Element:	40 Micron
Bowls:	Polycarbonate w/ Bowl Guard
Pressure Range in Regulator:	5 to 125 PSI (.4 to 8.6 bar)
Gauge:	0 to 160 PSI



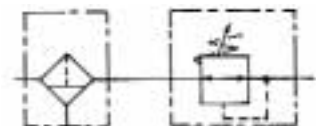
28369

Ordering

PORT SIZE NPT	MODEL	GAUGE PORT	WEIGHT LBS. (kg)	COMPONENTS			PIPE NIPPLE
				FILTER	REGULATOR	GAUGE	
1/2"	28344	1/4"	7.11 (3.22)	25341-020	27344-000	100067	Y27-54-C
3/4"	28354	1/4"	7.06 (3.20)	25351-020	27354-000	100067	Y27-55-C
1"	28364	1/4"	6.46 (2.93)	25361-020	27364-000	100067	Y27-56-C

Select the basic model number which represents the port size desired. If other options are desired, order each component separately.

GRAPHIC SYMBOL



NOTE: Shipped unassembled. For assembled unit, change the last digit from 4 to 9. Example: 28349